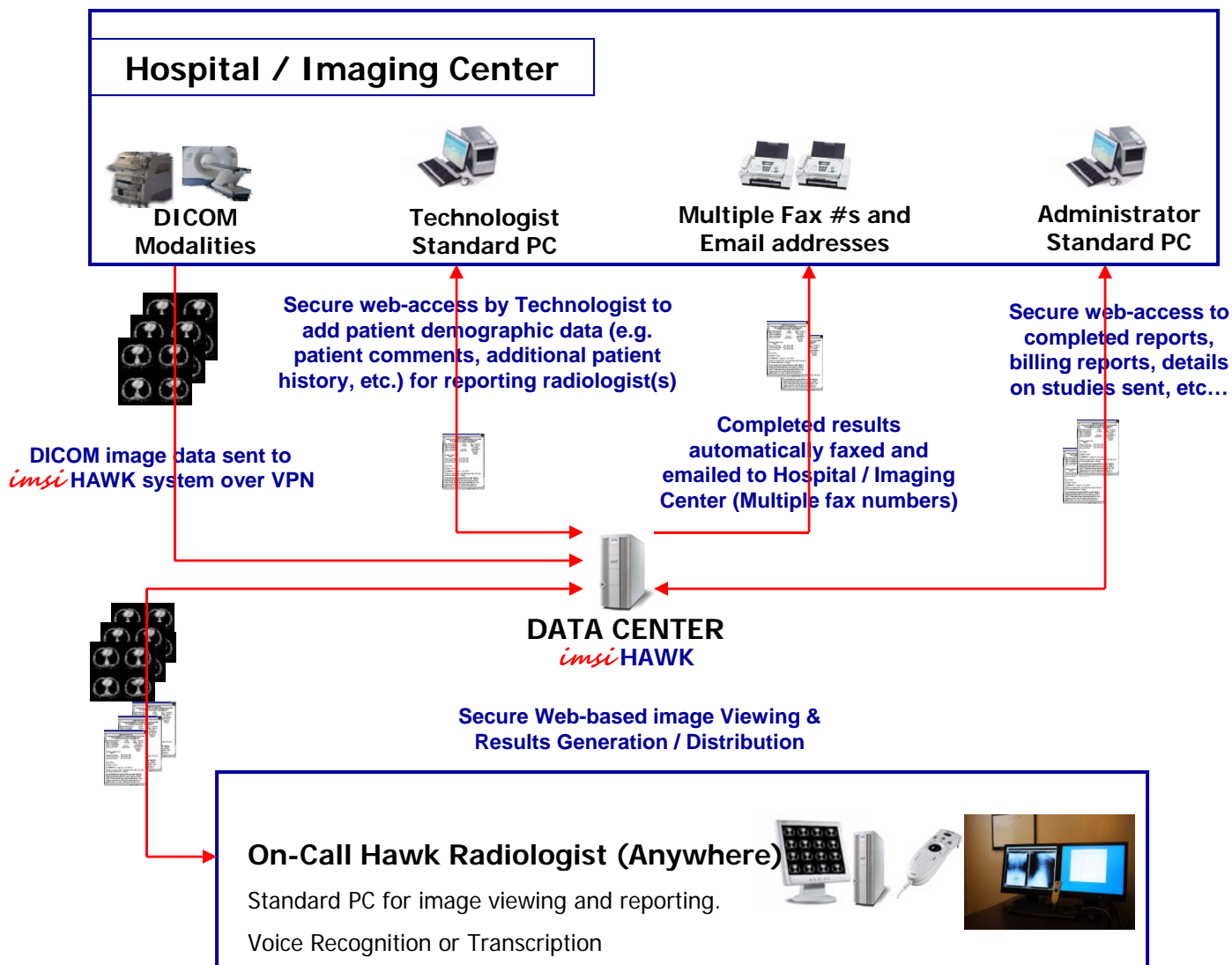


Web-Based Image & Report Distribution System



Typical Workflow:

1. Technologist sends DICOM image data to the *imsi* HAWK system.
2. Online radiologist is notified of incoming data by the *imsi* HAWK system, *imsi* MWL worklist, email, fax, and /or telephone.
3. Online radiologist generates report(s) while viewing images. Reports are typed, structured, or dictated with voice recognition. Results are immediately faxed, emailed, and merged with images on the *imsi* HAWK system.

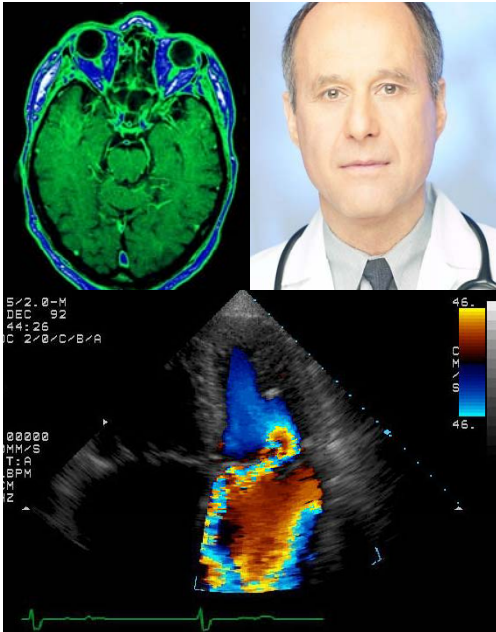
© 2011 Integrated Modular Systems, Inc.

imsiPACS™, imsiRIS.PACS™, imsiCARDIO.PACS™, imsi ORTHO.PACS™, imsiVIEW™, imsiVIEW PRO/3D™, imsiRIS™, imsiRIS-X2™, imsiImageWebGate™, imsiWEB™, imsiWEBX™, and *imsi*VOICE-Interactive™ are distributed by Integrated Modular Systems, Inc. These trademarks are owned by Integrated Modular Systems, Inc. All rights are reserved. OrthoView™ is a trademark of Meridian Techniques Ltd. of UK. All rights are reserved. DXRN™ is a trademark of Rorke Data of Eden Prairie, MN. All rights are reserved. Diagnostic PRO Advantage is a trademark of VIDAR Corporation of Herndon, VA. All rights are reserved. These specifications are subject to change



imsi HAWK

Web-Based Image & Report Distribution System/PACS Night or Day Hawk Systems



- HL7 order entry and scheduling interfaces
- Browser-based resulting system
- voice recognition option
- individualized macro/standards
- template support for radiologists
- coding entry for billing
- transcription option with *imsi* VOICE
- Grundig Business Systems® professional cordless microphone
- hosted digital dictation
- automatic data extraction from DICOM headers
- “in-process” status indicator to avoid duplicate reporting
- automatic update of worklist
- combined worklist for multiple PACS reading systems
- HL7 output available for interfacing to HIS/RIS/EMR (ORU, DFT)
- support for both preliminary and final resulting
- support for technologist entry of study data using browser access
- support for clerical processing of study data using browser access
- support for controlled access by referring physicians using Internet Explorer
- availability of automatic distribution of results by email and/or fax
- result documents produced in PDF format with customized format and design
- day of week, time of day, modality and institution dependent routing available
- mammography tracking and reporting